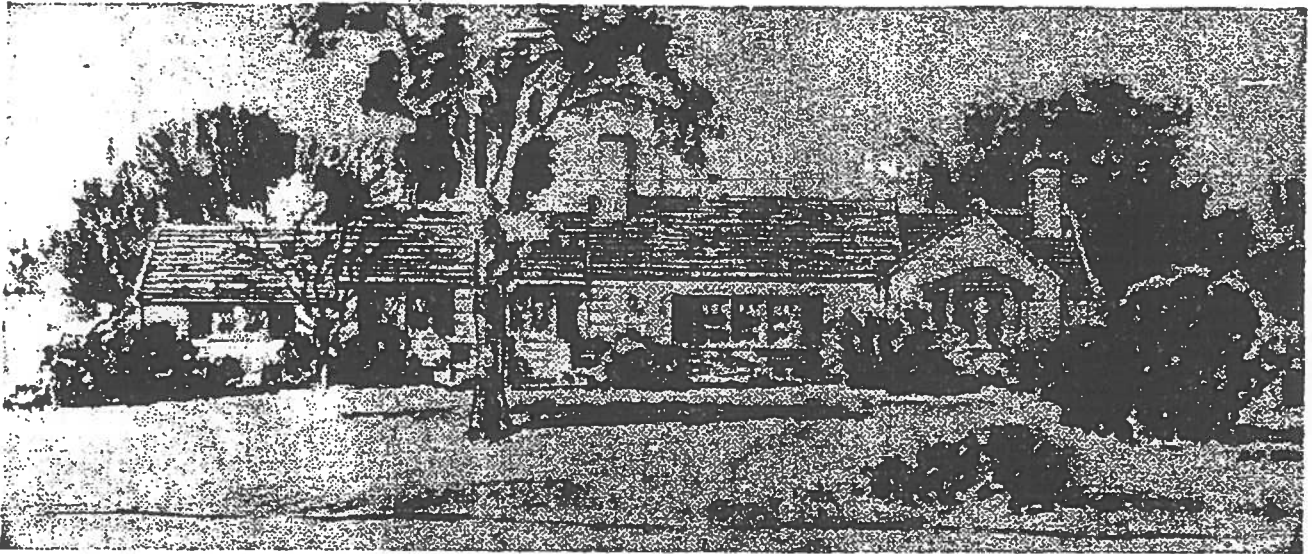


SATURDAY, SEPTEMBER 16, 1939

In Lake Country . . .



RAMAPO HEIGHTS *Sloatsburg, Rockland County, N. Y.* (Route 17 between Suffern and Tuxedo)

A Colonial Village. The community of RAMAPO HEIGHTS is a highland tract in the metropolitan region. No undesirable encroachments now or hereafter. 225 acres adjacent to the vast Harriman State Park. Tuxedo environment. The building and plot restrictions and the dedication to Ramapo Heights Association of more than 25 acres of interior recreational lands, which include swimming, skating and skiing facilities for the exclusive enjoyment of property owners, are parts of the ideal community planning.

A number of one and two story early American type homes are built around a New England "Village Green". Year round homes, superior in construction and appointments, all having oil burning heating plants with thermostatic control, two baths, and two-car garages. Surprisingly low cost.

RAMAPO HEIGHTS is within 40 minutes drive from George Washington Bridge via Route 4, then Route 2 and continuing along Route 17 to Sloatsburg. Signs point to Dream House. Representatives on property.

F. H. A.
APPROVED

COME AND SEE THE HOUSES
(or write for folder S)

Ramapo Heights Corporation
512 Fifth Avenue, New York